

conference & expo + oct 6-9, 2013



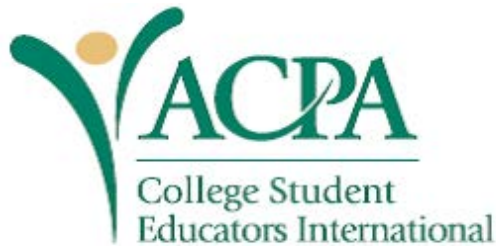
# Higher Education and Student Affairs

## Listening Tour



## Initiated at AASHE 2013

- Connect student affairs professionals working in the field of sustainability
- Provide information
- Listen to interests, concerns, emerging issues

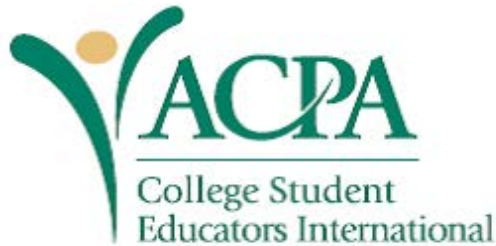


## Sustainability Advisory Committee

### Presidential Taskforce on Sustainability 06-08

#### Purpose

- address the association's interests and efforts to advance the international sustainable future's agenda
- institutionalize sustainability in "permanent structures" of the association



## ACPA / Who We Are / Leadership

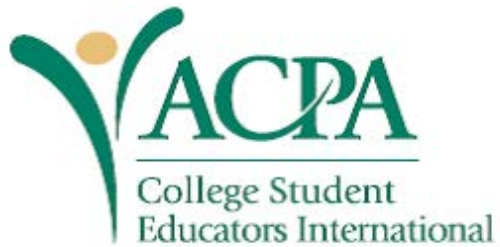
<http://www.acpa.nche.edu/sustaincomm>

### Chair

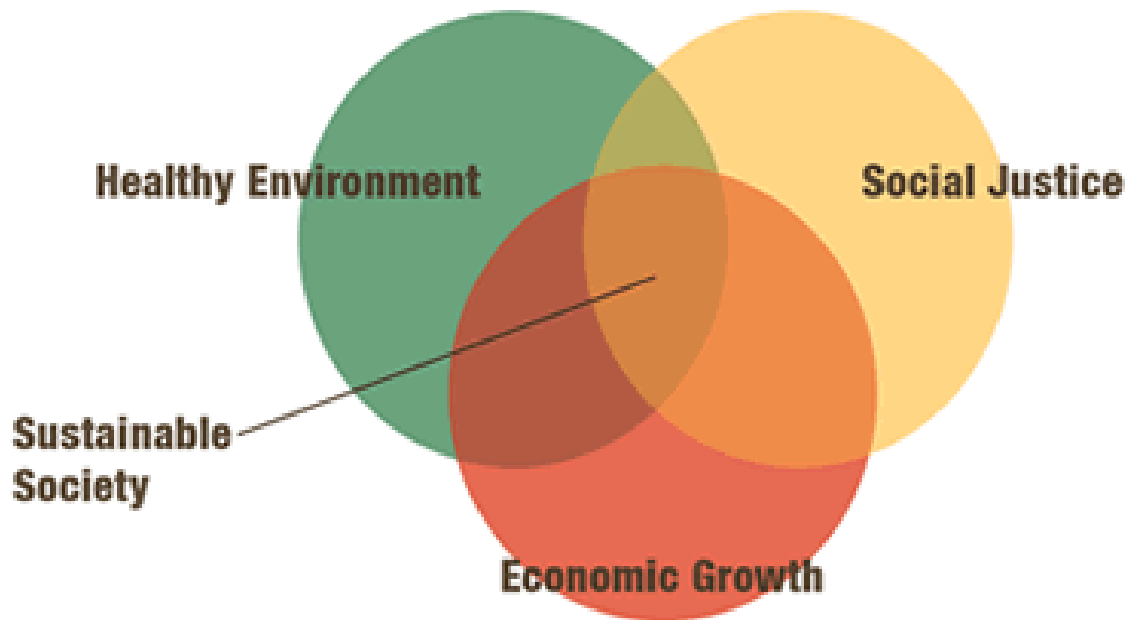
Jim Tweedy

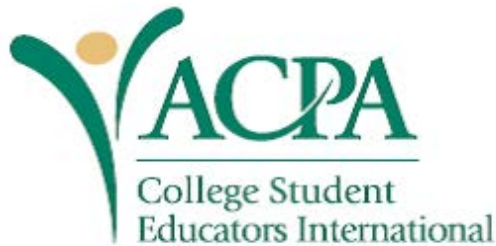
### Teams

- Member Education, Kaye Holman
- Organizational Infusion, Cori Cusker
- Sustainability Institute, Jess Belue Buckley
- Convention Sustainability, Eric Lassahn



## *Brundtland Report (1987)* **Triple Bottom Line**





## ACPA's 2008 Monograph *Toward a Sustainable Future*

### Sustainability Student Outcomes

- Define sustainability
- Relate sustainability to life and values
- Change actions and consumerism
- Explain environmental, economic, and social interrelationships
- Learn change agent skills
- Apply sustainability in community
- Demonstrate personal, professional, and social commitments







## Commission for Sustainable Communities

### Co-Chairs

Pam Su, San Francisco State University

Tom Kirch, Oregon State University

[www.nirsa.org/](http://www.nirsa.org/)

- About Us
- Leadership
- Volunteer Groups





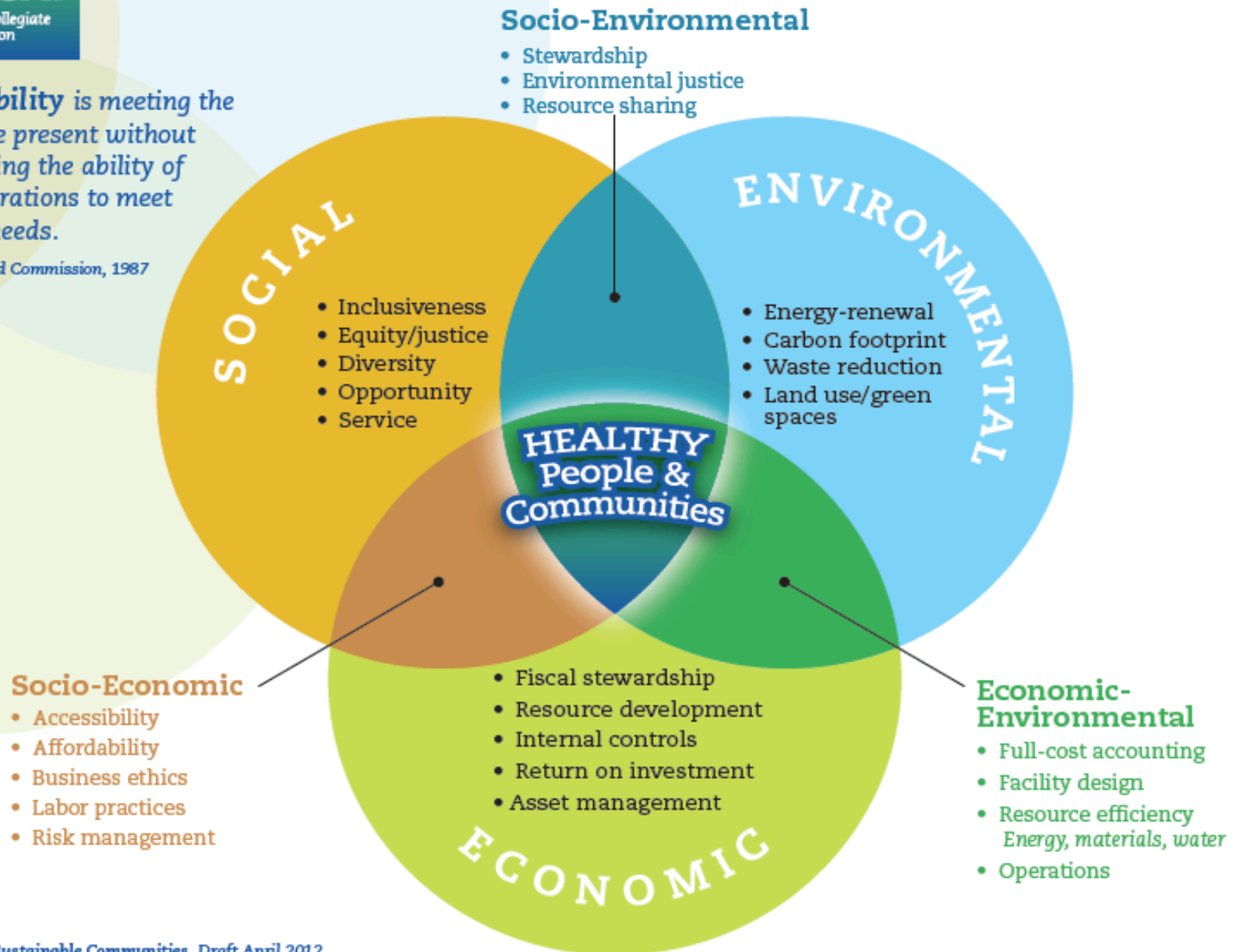
## NIRSA's 6 Strategic Values

- Health & Wellbeing
- Equity, Diversity, and Inclusion
- Leadership
- Service
- Global Perspective
- Sustainable Communities

# Valuing Sustainability in Collegiate Recreation

**Sustainability** is meeting the needs of the present without compromising the ability of future generations to meet their own needs.

— The Brundtland Commission, 1987



# NIRSA Commission for Sustainable Communities

Current focus of Commission's Action Plan:

- Resource Library
- Ambassadors and Mentors Program
- Key External Partnerships
- Conference/Educational Event Planning
- Active On-line Community of Practice





The **Sustainability Knowledge Community** exists to advance the role that Student Affairs can play in sustainability initiatives on college and university campuses.

## Chair

Tim Broderick, Colorado State University

<http://www.naspa.org/kc/sustainability/>



## SUSTAINABILITY

- Sustainability KC National Publication:  
Five Easy Fall Sustainability Programs
- Redeveloped Sustainability KC Website  
<http://www.naspa.org/kc/sustainability/>
- Topics
  - waste management
  - sustainable operations
  - alternative transportation
  - education & outreach
  - Dining
  - energy & emissions



HEASC is a network of higher education associations with a commitment to advancing sustainability both within their constituencies and within the system of higher education itself.

## Coordinator/Advisor

Deb Rowe

U.S. Partnership for Education for Sustainability

<http://heasc.aashe.org/>



## Partner Organizations

### **ACPA-College Student Educators International**

American Association of Community Colleges (AACCC)

American Association of State Colleges & Universities (AASCU)

### **Association for the Advancement of Sustainability in Higher Education (AASHE)**

Association of College and University Housing Officers – International (ACUHO-I)

Association of Higher Education Facilities Officers (APPA)

Campus Safety, Health, and Environmental Management Association (CSHEMA)

Council for Christian Colleges & Universities (CCCCU)

National Association of College & University Business Officers (NACUBO)

National Association of Educational Procurement (NAEP)

National Association of Independent Colleges & Universities (NAICU)

### **NIRSA: Leaders in Collegiate Recreation**



## HEASC Sustainability Fellows Program

**Alicia Sprow** - Alvernia University

**Douglas Goodstein** - University of Connecticut

**Eileen Joseph** - Cal Poly San Luis Obispo

**Erin Stanforth** - Portland Community College

**Kaye Holman** - Colorado State University

**Margaret Robinson** - Lane Community College

**Sean Williamson** - University of Maryland

**Tolga Durak** - Radford University





Where do sustainability initiatives intersect with your role in student affairs?

What could the Sustainability Advisory Committee do to better serve you in that role?



Do you have any sustainability-related concerns concerning student affairs? ACPA?

What do you see as emerging issues in sustainability and student affairs?



## Earth Day Webinar!

### Student Affairs Stories of Sustainability: Resources to Engage Students and Remove Silos

Thursday, April 17, 2014 at 1 pm EST

Register at <http://tinyurl.com/EDWebinar>



# Campus Sustainability Day

October 22, 2014

<http://campussustainabilityday.org/>



## AASHE 2014

October 26 – 29, 2014

Portland, Oregon

[www.aashe.org](http://www.aashe.org)

Debra Kaye Holman, PhD

Colorado State University

Email: [kaye.holman@colostate.edu](mailto:kaye.holman@colostate.edu)

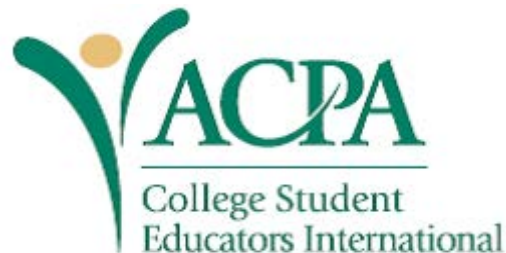
LinkedIn: [www.linkedin.com/in/kayeholman/](http://www.linkedin.com/in/kayeholman/)

James Tweedy, EdD

University of Delaware

Email: [tweedy@udel.edu](mailto:tweedy@udel.edu)

LinkedIn: [www.linkedin.com/pub/james-tweedy/3/742/48b](http://www.linkedin.com/pub/james-tweedy/3/742/48b)





Thank you for  
joining us!